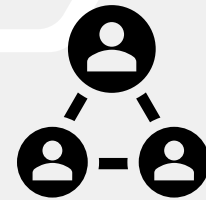


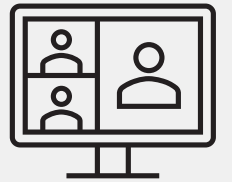
WELCOME!

While we are getting set up....

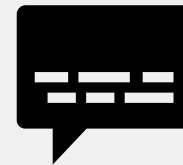
We would like to get to know our audience.



Please put your answer to the following question in the chat.



What's your interest in Cancer Survivorship ?



Survivorship Action Team Presents:

The Consortium in Action

*NYS CANCER SURVIVORSHIP:
IMPROVING CARE, BOLSTERING OUR
WORKFORCE*

December 14, 2023 | 11 AM – 12:30 PM



NYSCC QUARTERLY
MEETING SERIES



Housekeeping

Please mute your line.

If you have a question, please type it in the Chat Box.

Questions will be answered after the discussion.

This meeting is being recorded.

A link to the recording will be e-mailed to everyone who registered.

About Us

We are New Yorkers from all walks of life who work together to reduce the burden of cancer.



Join Today!



➤ *Learn about state-wide cancer prevention efforts*

➤ *Find resources to promote and implement Cancer Plan priorities and measure progress*

➤ *Collaborate with other members to achieve Cancer Plan goals and objectives*

Join an Action Team to implement Cancer Plan priorities



Colorectal Cancer



HPV Coalition



Skin Cancer



HEAL



Environmental Carcinogens



Lung Cancer



Survivorship

October/November 2023

New York State
Cancer Consortium


NYSCE-BLAST

[Consortium News/Updates](#) [October Breast Cancer Awareness Month](#) [November is Lung Cancer Awareness Month](#) [Health Equity](#) [Resources & Links of Interest](#) [Funding Opportunities](#) [Meetings & Trainings of Interest](#)

Do you or your organization have any cancer-related webinars, trainings, or events planned? How about suggestions for health promotion articles and funding opportunities? If so, let us know! We'll be happy to include them in upcoming e-blasts. blast@nyscc.org today.

CONSORTIUM NEWS/UPDATES

Quarterly Meeting Series: The Consortium in Action




Next up in the Consortium in Action Series:

- **December 14, 2023**
The Survivorship and Lifestyle Behaviors Action Teams
[Register Here](#)
- **March 12, 2024**
The Environmental Carcinogens Action Team
[Register Here](#)

Recent Consortium in Action Events

- Lung Cancer Screening: The Consortium in Action
- Taking a Job at Cancer Prevention: Closing the HPV Vaccination Gap in New York State
- Addressing the Cancer Burden in LGBTQ+ Communities: A Training from the National LGBTQ Cancer Network
[Click to view all past Member Meetings](#)

Breast Cancer Awareness Month



Join:
New York State Department of Health Recognizes October as Breast Cancer Awareness Month

"While October is Breast Cancer Awareness Month, we need to raise awareness about the steps to detect breast cancer early." State Health Commissioner Dr. James McDonald

According to the Centers for Disease Control and Prevention (CDC), besides skin cancer, breast cancer is the most common cancer among U.S. and New York women. One in eight women will develop breast cancer in their lifetime, and in New York State, nearly 16,700 new cases and 2,500 deaths from breast cancer are recorded each year. The risk of breast cancer increases with age and varies across racial groups. Black females are more likely to have breast cancer diagnosed at an advanced stage and die from the disease.


All cisgender women, persons assigned female at birth (including transgender men and nonbinary persons), and transwomen who currently use or have taken hormones should be aware of their personal risk for breast cancer and decide, with their health care provider, when to start screening. The [National LGBTQ Cancer Network](#) provides information about breast cancer risk, screening, and survivorship support.

If you are uninsured please visit [New York's Cancer Services Program](#) to find free breast, cervical and colorectal cancer screening near you.

Spotlighting Breast Cancer Awareness Month in Upstate New York

Dr. Stephen Edge, surgical oncologist and vice president for system quality and outcomes at Roswell Park Comprehensive Cancer Center, joined Jodie Kenney to talk about breast cancer treatment at Roswell Park, a Consortium member organization. Roswell Park is one of 58 National Cancer Institute-designated comprehensive cancer centers in the United States, and the only one in Upstate New York.

[You can watch the full interview with Dr. Stephen Edge here](#)





NYSCC Quarterly Meeting Series

Upcoming Meetings

➤ Environmental Carcinogens Action Team

March 12, 2024, 11:00 AM – 12:30 PM

➤ HEAL (Healthy Eating and Active Living) Action Team

June 20, 2024, 11:00 AM – 12:30 PM



Pre-Meeting Poll



Survivorship Action Team Presents:

The Consortium in Action

*NYS CANCER SURVIVORSHIP:
IMPROVING CARE, BOLSTERING OUR
WORKFORCE*



NYSCC QUARTERLY
MEETING SERIES



NYS CANCER SURVIVORSHIP: IMPROVING CARE, SUPPORTING OUR WORKFORCE

NYS Survivorship Action Team, December 14, 2023

Mission: “Cancer Survivors in NYS will have access to coordinated oncology and primary care teams, as well as supportive services & programs that will address their needs to make life the best it can be after a cancer diagnosis”

Maureen Killackey M.D. (NYSSAT Co-Lead)

Tessa Flores, M.D. (NYSSAT Co-Lead)

Christina Crabtree-Ide, PhD, MPH (NYSSAT Co-Lead)

Maura Abbott, PhD, AOCNP, CPNP (NP Fellowship lead)

Cancer Survivorship: Background

- 1985: Fitzhugh Mullan – “Seasons of Survival” NEJM=> NCCS, 1986
- 2007: IOM – “From Cancer Patient to Cancer Survivor: Lost in Transition”
- 2007: ASCO develops & disseminates Treatment Summaries, Survivorship Care Plans (SCPs)
- 2013: George Washington University (GWU) PCORI – “Advancing Patient-Centered Cancer Survivorship Care” (with ACOS-CoC, Livestrong, ACS)
- 2016: American College of Surgeons Commission on Cancer implements Survivorship Standard for SCPs
- 2018: CDC – Comprehensive Cancer Control: Promoting Survivor Health & Wellness
- 2020: ACOS-CoC Revised Survivorship Standard - Focus on Survivorship Teams, Services
- 2023-> Increased Governmental, National, State, Community & Organizational Involvement

Cancer Survivorship: Evolution!

- **2013 IOM**: “Delivering High Quality Cancer Care: Charting a New Course for a System in Crisis”
- **EMRs**, +/- Interoperability; **Patient Portals**
- Increased **Patient/Caregiver Support Services**: Navigation, Social Work, Nutrition, Rehab, etc.
- Collaboration & Practice Integration of **Expanded Clinical Team**: Advanced Care Providers
- **Multidisciplinary Team Approach** (Standard of Care?)
- Focus on **Social Determinants of Health, Diversity, Equity & Inclusion**
- Utilization of **Genetic Risk evaluations, Biomarker Analyses**
- **New Therapeutic Approaches**

Delivery of High-Quality Cancer Care:

HIGHER HEALTH LITERACY, WELL-INFORMED PATIENT & FAMILY

PRIMARY CARE

CANCER
PRE-
VENTION



CANCER
SCREENING



DIAGNOSIS



CANCER
TREATMENT



RECOVERY/
SURVIVORSHIP



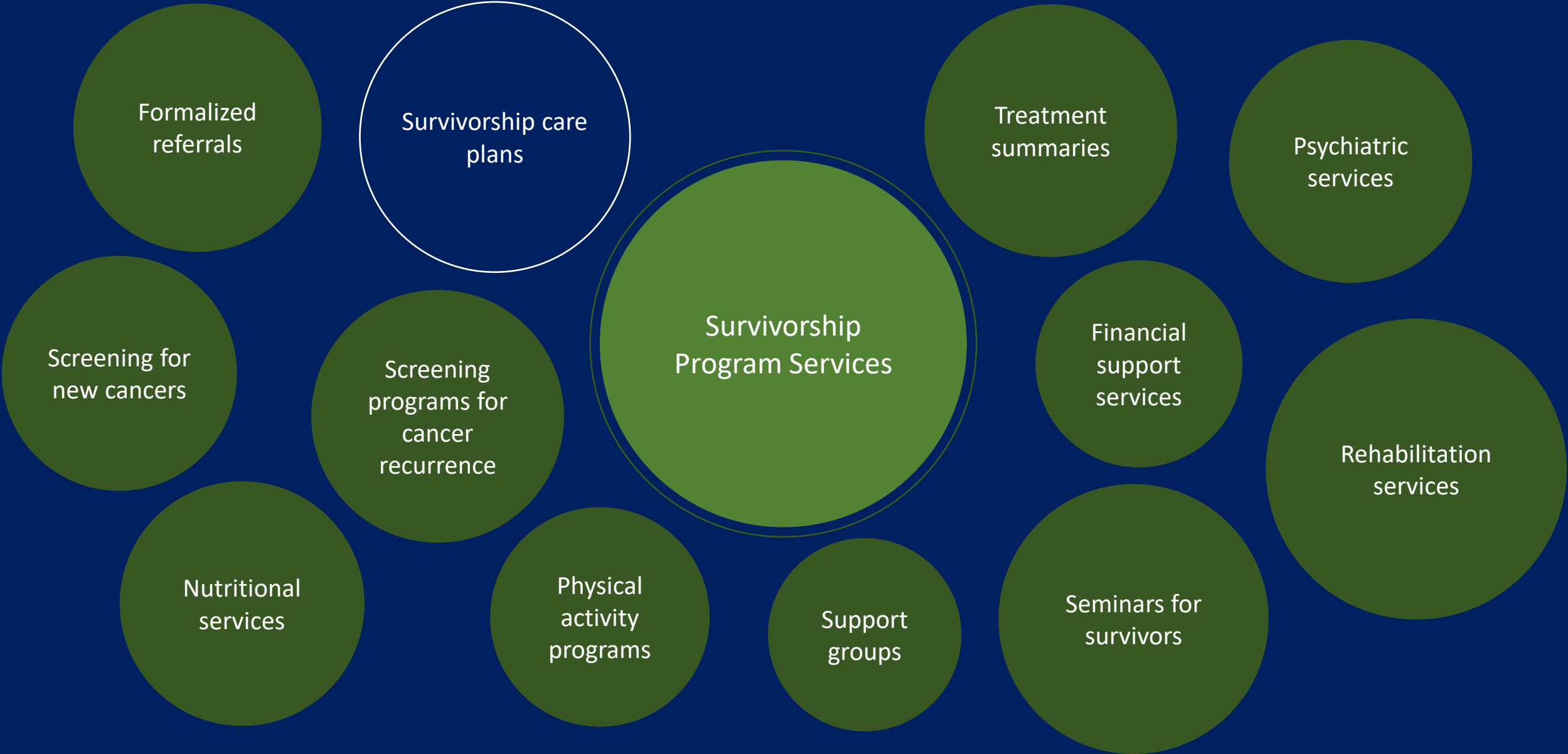
END-OF-LIFE
CARE

PSYCHOSOCIAL & PALLIATIVE CARE

TARGETED NAVIGATION BASED ON NEED

CLINICAL RESEARCH

Commission on Cancer Programs: 75% US Cancer Care, Std 4.8



Cancer Survivorship Clinical Practice Guidelines

National Academy
of Medicine
Recommendation

National Comprehensive Cancer
Network (NCCN)

Dr. Tessa Flores!

By Topic:

- Anthracycline-induced cardiac toxicity
- Anxiety and depression
- Cognitive function
- Exercise
- Fatigue
- Healthy lifestyles
- Immunizations and infections
- Menopause-related symptoms
- Pain
- Sexual function (female/male)
- Sleep disorders

American Society of Clinical Oncology
(ASCO)

By Topic:

- Anxiety and depression
- Cardiac dysfunction
- Chronic pain
- Fatigue
- Fertility preservation
- Neuropathy
- Palliative care

By Cancer Site:

- Breast (ASCO/ACS)

American Cancer Society (ACS)
Survivorship Care Guidelines for Primary
Care Providers

By Topic:

Holistic:

- Care coordination
- Health promotion
- Long-term and late effects
- Nutrition and physical activity
- Screening
- Surveillance

By Cancer Site:

- Breast (ACS/ASCO)
- Colorectal
- Prostate
- Head and neck

**THE GEORGE
WASHINGTON
UNIVERSITY**

WASHINGTON, DC

Advancing Patient-Centered Cancer Survivorship Care

Adapted from the National Cancer Survivorship Resource
Center

www.cancer.org/survivorshipcenter

Dr. Maureen Killackey, GWU External Advisory Board, Commission on Cancer

Development of this presentation was made possible by cooperative agreement #5U55DP003054 from the Centers for Disease Control and Prevention. Its contents are solely the responsibility of the authors and do not represent the official views of the Centers for Disease Control and Prevention. The views expressed here do not necessarily reflect the official policies of the U.S. Department of Health and Human Services; nor does mention of trade names, commercial practices, or organizations imply endorsement by the U.S. government.

GW Cancer Center

GW Cancer Institute
THE GEORGE WASHINGTON UNIVERSITY



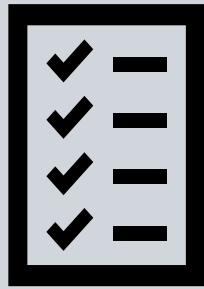
NYS Comprehensive Cancer Plan: Priority Areas of the 2018-2023 Plan



Cancer-
Related
Health Equity



Health
Promotion &
Cancer
Prevention



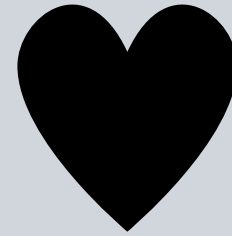
Early
Detection



Treatment



Palliative
Care



Survivorship



Health Care
Work
Force

NYS Comprehensive Cancer Plan, 2018-2023

Survivorship Objectives

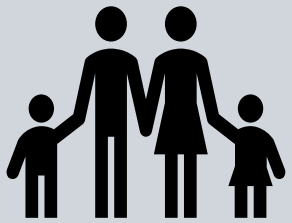
Cancer Indicator	Baseline	2023 Objective and Most Recent Data	
Adult cancer survivors who receive a written survivorship care plan	43.3 Percent (2012-2014)	NYS - 2020 49.2	2023 Objective - 45.5
Adult cancer survivors with frequent physical distress	23.1 Percent (2016)	NYS - 2021 19.3	2023 Objective - 21.9
Adult cancer survivors with overweight or obesity	63.4 Percent (2016)	NYS - 2021 64.5	2023 Objective - 60.2
Adult cancer survivors who engage in leisure-time physical activity	67.4 Percent (2016)	NYS - 2021 67.9	2023 Objective - 70.8
Adult cancer survivors with fair or poor general health status	31.2 Percent (2016)	NYS - 2021 27.8	2023 Objective - 29.6
Adult cancer survivors with frequent mental distress	13.4 Percent (2016)	NYS - 2021 13.5	2023 Objective - 12.7

As of June 2023, based on data available through 2020 or 2021:

Three of the six objectives have met the Plan target (or exceeded it).

Three, however, have seen no significant change.

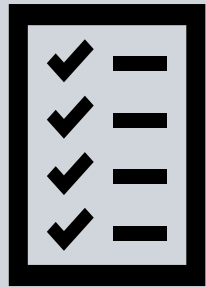
NYS Comprehensive Cancer Plan: Priority Areas of the 2024-2029 Plan



Cancer-
Related
Health Equity



Health
Promotion &
Cancer
Prevention



Early
Detection



Treatment



Palliative
Care



Survivorship



Health Care
Workforce

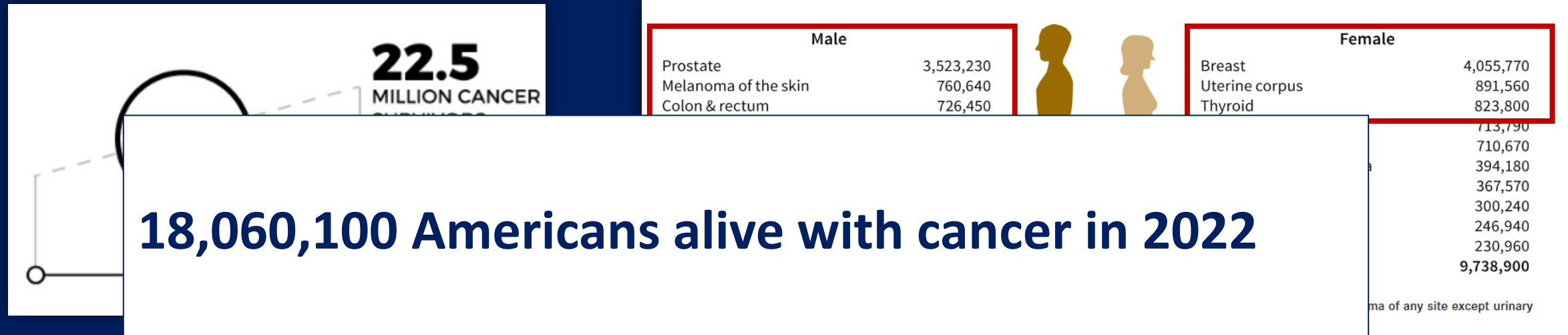
Understanding How NYS Cancer Programs Implement Survivorship Care: CoC Program Assessment Findings (Responses from 55/62 ~90%- Eligible NYS CoC-Accredited Programs)

- ~70% NYS CoC Cancer sites have Survivorship Programs (required)
- Survivorship Care Plans when developed, <50% routinely share with PCPs
- Barriers: EMR issues, prep time, reimbursement, value?
- <50% coordinate survivorship care with local PCPs
- 50% that do coordinate with PCPs experience challenges such as provider knowledge, confidence
- Bidirectional collaboration and communication lacking
- Few programs provide training or educational opportunities for PCPs, Ob/Gyns and nurses about survivors' cares and needs

NYS SURVIVORSHIP ACTION TEAM=>NYS Comp Ca Plan, NP TRAINING & ECHO!

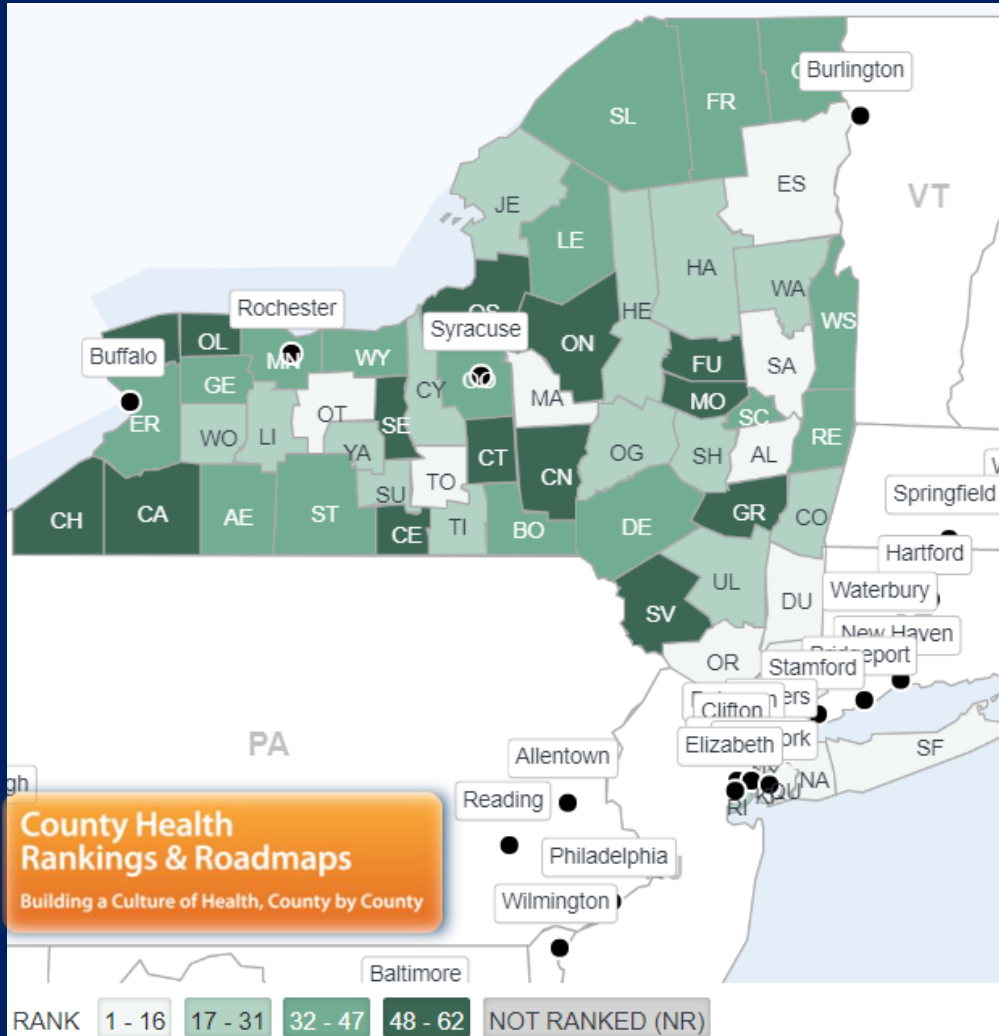
Survivorship and NYS Variation

Cancer Survivors: US



- The number of cancer survivors is projected to increase by 24.4%, to 22.5 million, by 2032.¹
- The number of cancer survivors is projected to grow to 26.0 million by 2040.¹
- In 2022, **69%** of survivors have lived 5+ years since their diagnosis; **47%** of survivors have lived 10+ years since their diagnosis; and **18%** of survivors have lived 20+ years since their diagnosis.¹

NYS Health outcomes and factors variation



	Number of 5-year cancer survivors: all tumor types	Population/ 1 Primary Care Provider
Niagara	5,121	2,480
Chautauqua	3,255	1,800
Cattaraugus	1,831	2,170
Lewis	506	1,540
Oneida	4,957	1,310
Sullivan	1,481	2,710
NYS County-level Range	400,900 5-year survivors 1.2M survivors	690-13,330 1,170 Average
US Average	18.1M	1,310

Estimates derived from NYS DOH Cancer Registry data for NYS Counties
[Statistics and Graphs](#) | [Division of Cancer Control and Population Sciences \(DCCPS\)](#)
 New York | [County Health Rankings & Roadmaps](#)

Challenges in cancer survivorship

- Widespread variation in models of cancer survivorship care delivery
- Workforce shortages in oncology, primary care, and cancer survivorship
- Medical education specifically related to Cancer Survivorship is limited and informal
- Rural Patients and special populations:
 - Distance to care, limited options for transportation
 - Digital divide: internet services and health literacy
 - Fewer PCPs, oncologists, and cancer services
 - Social stigma, opiate epidemic, challenges to already stretched resources

Cancer Survivor Needs



Physical Well-Being

- Functional status
- Fatigue and sleep
- Overall physical health
- Fertility
- Pain
- Food-Quality, Enough?



Social Well-Being

- Family distress
- Roles and relationships
- Affection/sexual function
- Appearance
- Isolation
- Finances/employment



Quality of Life

Psychological Well-Being



- Control
- Anxiety
- Depression
- Fear of recurrence
- Cognition/attention

Spiritual Well-Being



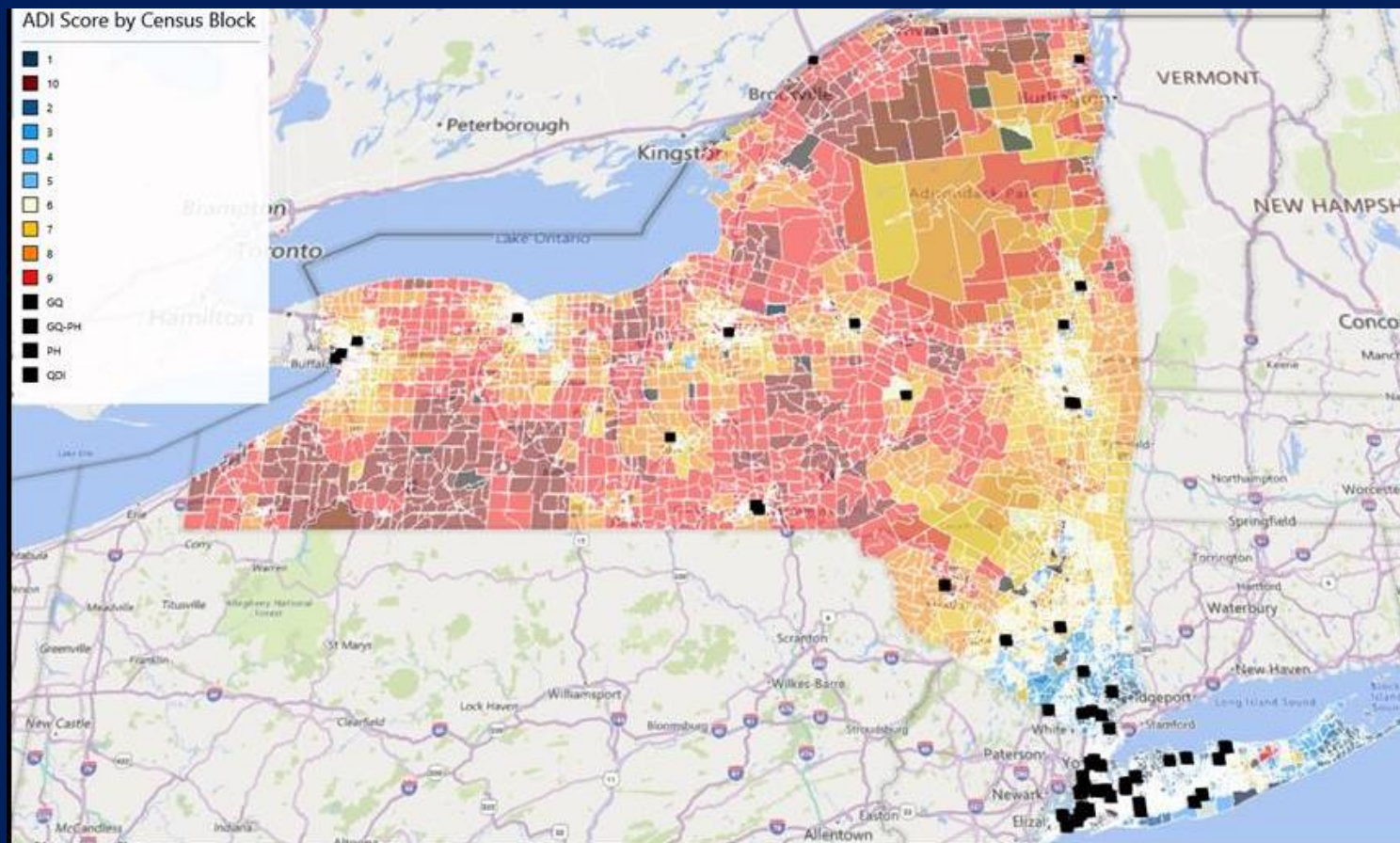
- Meaning of illness
- Religiosity
- Transcendence
- Hope
- Uncertainty
- Inner strength

Few providers and limited oncology workforce

Understanding How NYS Cancer Programs Implement Survivorship Care

(Responses from 55/62 ~90%-
Eligible CoC-Accredited Programs)

Limited workforce, limited
availability in rural and underserved
regions



Map shows distribution of NYS Commission on Cancer-accredited Programs and Area Deprivation Index Score

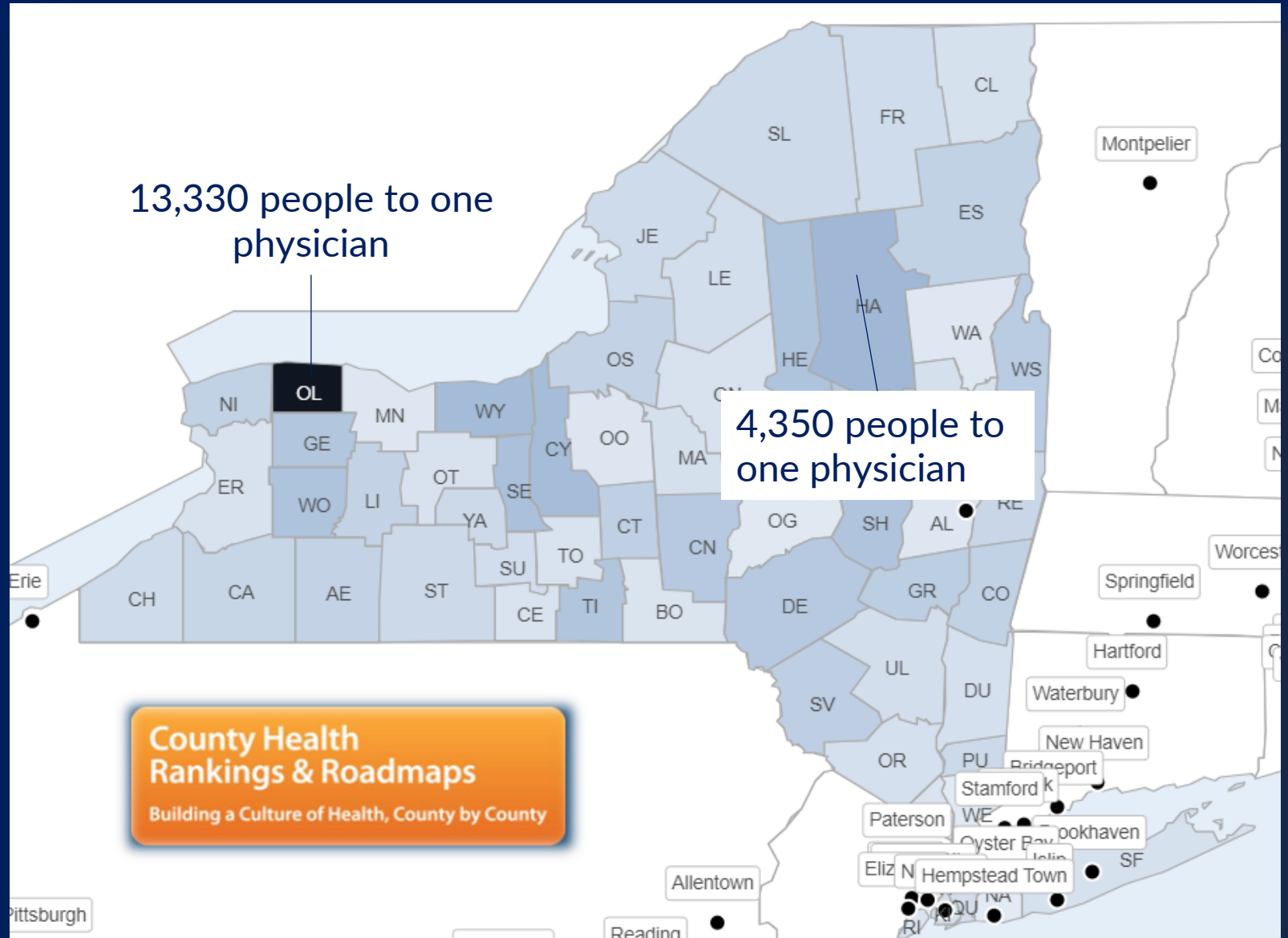
[Hospital and Facilities | ACS \(facs.org\)](https://www.facs.org/)

[Neighborhood Atlas - Home \(wisc.edu\)](https://www.wisc.edu/)

Few Primary Care Providers and limited workforce

Average: 1,170 people per provider

Range: 690-13,330 people per provider



Action team initiatives

- Nurse Practitioner Cancer Survivorship Fellowship program
 - Collaboration between Bassett Health, Columbia University Comprehensive Cancer Center and Roswell Park Comprehensive Cancer Center
- Cancer Survivorship Project ECHO (Extension for Community Healthcare Outcomes)

NP FELLOWSHIP: BUILDING THE ADVANCED PRACTICE PROVIDER WORKFORCE

Maura Abbott, PhD, AOCNP, CPNP (NP Fellowship lead)

Planning Team:

Roswell

Tessa Flores, M.D.

Christina Crabtree-Ide PhD, MPH

Andrew Storer, PhD, DNP, RN, FNP-C, ACNP-BC, FAANP

Bassett

Maureen Killackey, M.D.

Gregory Rys, DNP/FNP

Timothy Korytko, M.D.

Columbia University

Maura Abbott, PhD, AOCNP, CPNP (NP Fellowship lead)

Ellen Fahey, DNP, MSN, FNP-C

Stephen Ferrara, DNP, FNP-BC, FAAN, FAANP, FNAP, FNAM

Locations/sites

- Bassett Health
 - Rural health system with 5 hospitals, 38 community-based clinics, 23 school-based health centers
 - 8 NYS counties/5600 square miles; Commission on Cancer-accredited Cancer Program for 75 years
- Columbia University – Herbert Irving NCI-Comprehensive Cancer Center, NYC
 - Full continuum of cancer care delivered by disease-specific multidisciplinary teams
 - NYS Cancer Services Program Provider; NIH Minority-based Community Clinical Oncology Program
- Roswell Park Comprehensive Cancer Center, NCI-Comprehensive Cancer Center, Buffalo NY
 - Mid-sized city, academic cancer center, centralized Comprehensive Cancer Screening and Survivorship program, FQHC partnerships, strong community presence

Structured training

- **Online Training Modules – prior to clinical rotation**
 - The George Washington School of Medicine & Health Sciences
- **Didactic Sessions – during rotations @ each site**
 - Onsite
 - Lectures
 - Grand Rounds
- **Weekly Check-Ins with Program Leaders**
- **Clinical Rotations**
 - ~4 weeks at each location – urban, suburban, and rural
 - Designated preceptors

Outcomes and lessons learned

- **Outcomes**

- 1 Columbia DNP Student Completed Pilot
 - Primary Program – FNP
 - Oncology Subspecialty
 - Final Semester of DNP Program – **INTENSIVE**

- **Lessons Learned**

- Gaps in Care in Underserved Communities
 - Similarities between Urban and Rural gaps
 - Differences between Urban and Rural gaps

Future directions

- Larger cohort
- Open to students from schools besides Columbia Nursing
- Working to develop a full post graduate residency program
 - Accreditation
 - Funding

SURVIVORSHIP PROJECT ECHO

(Extension for Community Healthcare Outcomes)

Collaborators:

NYSDOH/NYSCCCP

SUNY Upstate (The Upstate Foundation, Inc.)

NYS Survivorship Action Team

Subject matter team leads

Maureen Killackey M.D.

Tessa Flores, M.D.

Christina Crabtree-Ide, PhD, MPH

Funding: Centers for Disease Control and Prevention

What is a Project ECHO?

- Collaborative, hub & spoke model of medical education and care management
- Goal is to form long-lasting partnerships between community-based provider teams and specialized providers to create bi-directional learning networks
- Increases workforce capacity to provide best-practice specialty care to patients wherever they may live; reduces health disparities

“Moving knowledge, not people”

NYS Survivorship ECHO Program Goal

- The goal of the Survivorship ECHO program is to improve knowledge and access to high-quality, evidence-based information related to Survivorship Care for healthcare teams who care for patients with a history of cancer
- The aim is to educate Primary Care teams on issues faced by cancer survivors, develop integration with the Oncology team and patient navigation services, and identify and utilize community resources

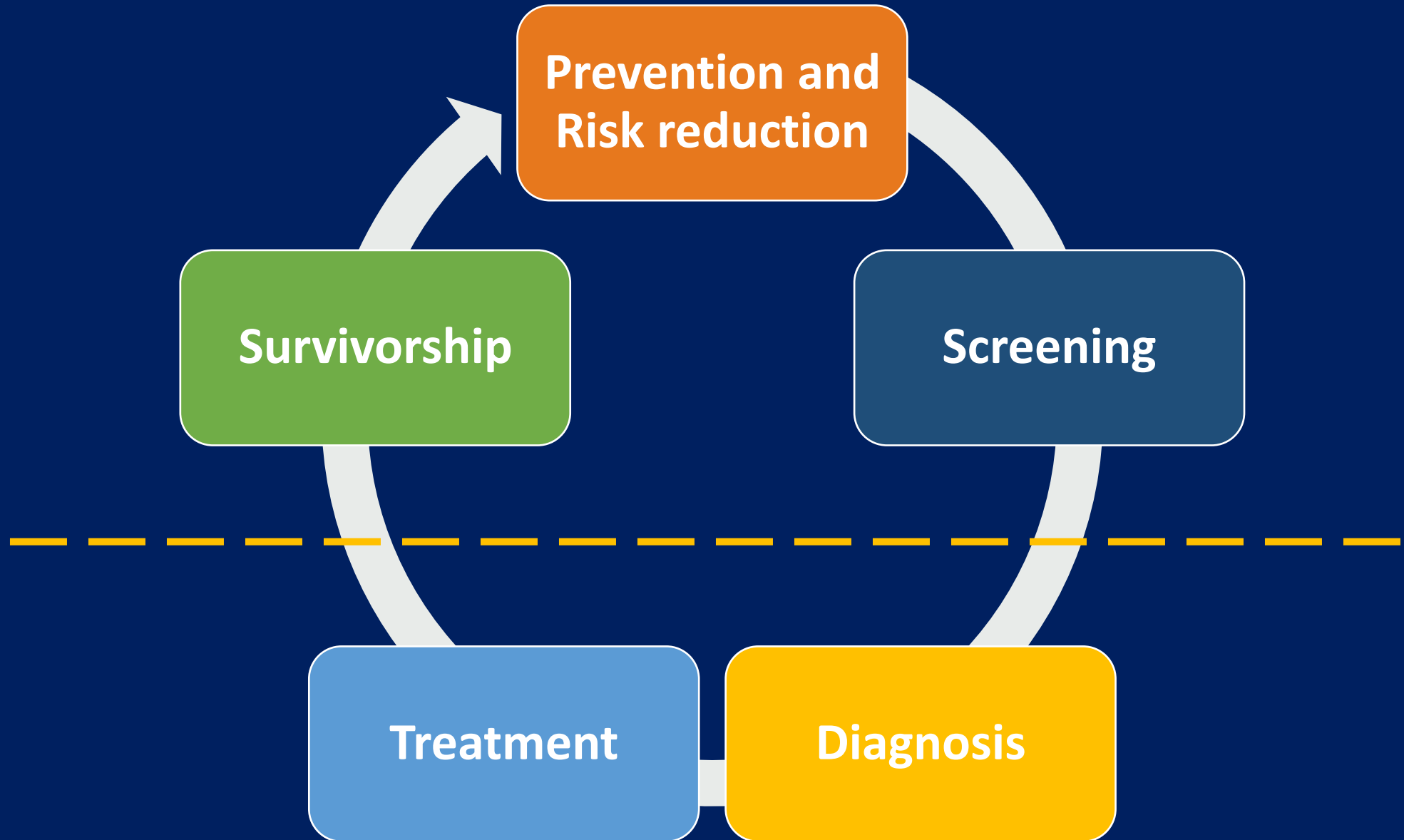
NYS Survivorship ECHO: Target Participants

- Primary care teams providing care to rural and underserved/under-resourced populations in NYS
- Any multi-disciplinary teams who care for cancer survivors in NYS

Structure

- 6 sessions
- Once monthly beginning in January 2024
- Each session has one facilitator and several subject matter experts
- Brief didactic portion then case studies, interactive discussions, Q&A

SURVIVORSHIP FOCUS AREAS: CANCER CONTINUUM



Topic areas: an overview

1. Introduction and Survivorship 101: current trends, guidelines and models of care
2. Survivorship teams
3. Medical issues in Survivorship
4. Exercise/Diet/Nutrition/Lifestyle
5. Adolescent and Young Adult Survivorship, Supportive Care
6. How to identify and work with Community/Referral Resources

Topic areas: an overview

- Risk stratification of survivors: genetic predispositions, family history, treatment regimens
- Specific discipline overview: e.g. Bone health, Cardio-Oncology; Clinical Genetics
- What's new in cancer treatments: updates about immunotherapy, oncology drugs, radiation approaches and resultant immediate/short and long-term effects
- Tips and tricks: working with oncology and/or PCP teams, PCP and oncologist responsibilities
- Onco-fertility
- Sexual health
- Palliative care team
- Psychosocial support
- How to identify supportive care needs (e.g. assessments, surveys, counseling)
- Meeting needs of diverse communities: challenges with specific diverse communities (e.g. SGM, rural, migrant populations)

Scheduled sessions and subject matter discussants

Session 1: Introduction and Survivorship 101

January 11, 2024 12-1:00pm	Maureen Killackey, MD, FACS, FACOG Tessa Flores, MD Sylvia K. Wood PhD, DNP, ANP-BC, AOCNP Facilitator: Christina Crabtree-Ide, PhD, MPH
---	---

Session 2: Survivorship Teams

February 8, 2024 12-1:00pm	Tessa Flores, MD Gregory P. Rys, NP Maura Abbott, PhD, AOCNP, CPNP-PC, RN Facilitator: Maureen Killackey, M.D.
---	---

Session 3: Medical Issues in Survivorship

March 14, 2024 12-1:00pm	Craig D Hametz, MD, FACC, FASE, FASNC Tessa Flores, MD Facilitator: Maureen Killackey, M.D.
---	---

Session 4: Survivorship Lifestyle Behaviors

April 11, 2024 12-1:00pm	Mara Ginsberg, Esq. Timothy Korytko, MD Facilitator: Christina Crabtree-Ide, PhD, MPH
---	---

Session 5: Survivorship and Sexual Health

May 9, 2024 12-1:00pm	Kristin Sobieraj, PA Facilitator: Tessa Flores, M.D.
--	---

Session 6: Supportive Care in Survivorship

June 13, 2024 12-1:00pm	Anne Moyer, PhD Robin Eggeling Facilitator: Christina Crabtree-Ide, PhD, MPH
--	--

NEXT STEPS: Disseminate/Announce Opportunity

- SUNY Upstate
 - MSSNY
 - Commission on Cancer Programs
- NP Professional Societies
- Community Based Organizations
- Today's Presentation to YOU!**

Select Participants (~30 Programs)

Implement Series

Linking NYS statewide expertise, Fostering a Network of Survivorship Providers

**LINDSAY ET AL – PLEASE INSERT INTO
THIS SLIDE THE LINK TO INDICATE
INTEREST OR NOMINATE PROGRAMS
FOR POSSIBLE PARTICIPATION IN THE
SURVIVORSHIP ECHO SERIES**

Resources

Advancing Patient-Centered Cancer Survivorship Care

Adapted from the National Cancer Survivorship Resource
Center


www.cancer.org/survivorshipcenter

Dr. Maureen Killackey, GWU External Advisory Board, CoC Project

Development of this presentation was made possible by cooperative agreement #5U55DP003054 from the Centers for Disease Control and Prevention. Its contents are solely the responsibility of the authors and do not represent the official views of the Centers for Disease Control and Prevention. The views expressed here do not necessarily reflect the official policies of the U.S. Department of Health and Human Services; nor does mention of trade names, commercial practices, or organizations imply endorsement by the U.S. government.

Cancer Survivorship E-Learning Series

GWcanceradmin@gwu.edu



 School of Medicine
& Health Sciences

Log In / Register

HomeMy CoursesCancer InstituteDCRxE Learning SeriesInfectious DiseasesPAPediatrics

Cancer Survivorship E-Learning Series for Primary Care Providers

A program of the National Cancer Survivorship Resource Center®



GW Cancer Institute

THE GEORGE WASHINGTON UNIVERSITY

2030 M Street NW, Suite 4003 Washington, DC 20036

- Phone: 202- 994-4088
- Email: gwci@gwu.edu

For more information, or to receive updates on other webinars and educational offerings from the GW Cancer Institute:

- Visit the GW Cancer Institute's website.
- Read our Patient Navigation and Survivorship e-Newsletter
- Join our mailing list

System Access and Course Enrollment

1. If you do not have an account, register for one and then click on "Log In/Register" on the top right of the page. If you already have an account, simply **Log In** using your email and password.
2. Once you are signed in or have created an account, enter the enrollment code "PCTrain" in the box next to the REDEEM button below.

to redeem an enrollment code.

Technical Support

If you are experiencing technical difficulties or difficulty logging in, please contact Learn Something's Customer Service team:

1-877-399-4925
Monday - Friday
8:30 am - 5:30 pm EST

- If you cannot log into the system, please reset your password.
- You will receive an e-mail from "George Washington University <do-not-reply@learnsomething.com>" with information to reset your password.

For security reasons, neither the GW Cancer Institute nor GW's Office of Continuing Education in the Health Professions have access to your password information and cannot reset your password.

Explore GW Cancer Center Online Trainings

Courses include free continuing education credits for:

- CHES®/MCHES®
- Nursing CEU
- AMA PRA Category 1 Credit
- NASW, Certified Health Education Specialist/Master Certified Health Education, and more!
- Comprehensive list of disease site topics, clinical issues, supportive services such as navigation, addressing barriers to care, financial issues

Post-Meeting Poll



Question & Answer



Join the Consortium and Attend Upcoming Meetings

Upcoming Meetings

➤ **Environmental Carcinogens Action Team**

March 12, 2024, 11:00 AM – 12:30 PM

[Register Here](#)

➤ **HEAL (Healthy Eating Active Living)**

June 20, 2024, 11:00 AM – 12:30 PM

[Register Here](#)



Thank you for Attending



cancerconsortium@health.ny.gov

New York State



Cancer Consortium

